



ATTIVA
Gynè®

ATTIVA
Gynè®

ATTIVA GYNÈ

IS PRODUCED AND CERTIFIED IN ITALY

www.temamedicina.com
TEMA MEDICINA
SCIENCE AND TECHNOLOGIES
FOR AESTHETIC MEDICINE

TEMA MEDICINA srl Via dei Fornaciai 29E 40129 BOLOGNA, ITALY
Tel. +39 051 0828559 - info@temamedicina.com - www.temamedicina.com - www.attivarf.com

For the intimate
well-being of your patients

Non-surgical vaginal rejuvenation

ATTIVA® Gynè has been designed for female intimacy. It helps to combat symptoms such as vaginal laxity, dryness, and mild stress urinary incontinence (S.U.I.) that can be caused by aging, childbirth, and hormonal changes. The Attiva Gynè treatment can be performed in a clinic by a nurse or a physician's assistant under the supervision of the physician.

In the treated patients, we can observe a restoration of the urogenital mucosa's structure with, as a consequence, an improvement in their quality of life. Results are felt the first day right after treatment, and the tightening effect is noticeable within 4 to 6 weeks, hence a high degree of patient satisfaction.



Safety and efficacy with Gynè endo-vaginal technology

Attiva Gynè heats the tissues in a focused way inside the vagina and the vulvar area to stimulate the cells to produce new collagen. The improvement is noticeable from the first sessions. The patented Attiva Gynè treatment head can be used intra-vaginally and also on the labia majora. Thanks to its patent, the Attiva probe rotates and allows a minimally invasive and highly soft treatment. The Subdermal Induced Heat (S.I.H.) technology stimulates the cells producing collagen by heating the tissues inside the vagina and the labia. The electrodes on the handpiece are positioned in a spiral

pattern, wrapping the entire perimeter and length of the probe. Hence the treatment can be carried out with a gradual and straightforward, non-traumatic rotation, according to the set time cycle, guaranteeing an effective and complete treatment of the whole treated area. The specially designed external support allows you to keep the handpiece still during the treatment without the operator's assistance; it is, therefore, effortless to use. The temperature sensor on the handpiece and the external thermal imaging camera allows you to work in total safety with precise and constant monitoring of the heat-induced inside the tissues.

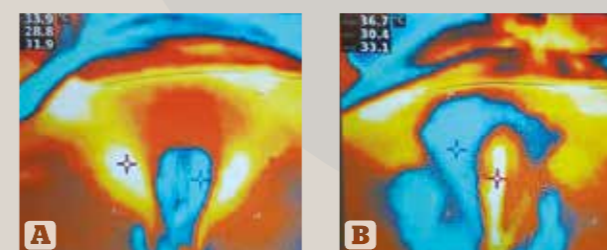


Figure 1 (A) Before and (B) after treatment. Image taken with a thermocamera. By Dr Arna Shab & Dr Catharina Shab.

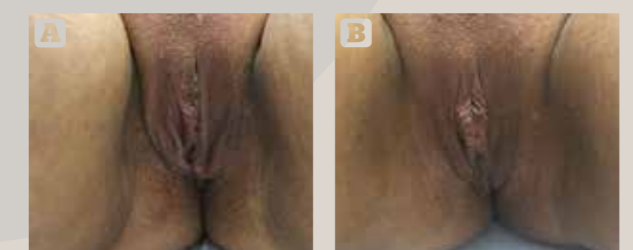


Figure 2 (A) Before and (B) after treatment. By Arna Shab & Dr Catharina Shab.